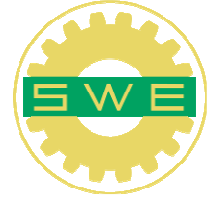


SWE-EWS-NEWS



Society of Women Engineers,
Eastern Washington Section
PO Box 364, Richland WA 99352
www.eastwashingtonswe.org

Opening Notes

Wow, can you believe 2013 is almost here?! I hope everyone has had a great year so far. I have had a great time at the EWS events and have really enjoyed meeting new faces at the Work Life Balance and Membership Event! Thanks to the board members, speakers, general members and supporters for making these events a success. And for those who were unable to attend the recent events, the December Holiday Party is just around the corner! Following EWS tradition, the Holiday Party will feature a pot-luck and White Elephant gift exchange. I look forward to sharing a warm meal with you all :)

Happy Holidays!

Michelle Parker
EWS President



Inside this Issue

Opening Notes	1
Upcoming Events	1
Fall Business Meeting	1
Holiday Party	2
Congratulations!	2
Work/Life Balance Panel	2
Robotics Competition	2
Region J Conference	2
Halloween Party	3
Membership Event	4
Positions	6
Contacts	6

Upcoming Events

November 8-10	WE12 National Conference
November 13 th	Fall Business Meeting
December 14 th	Holiday Party
January 8 th	Board Meeting
January 21 st	The Way We Are Meeting

Please RSVP to easternwashingtonswe@gmail.com if you plan on attending upcoming events.

Fall Business Meeting



Tuesday, November 13th 2012, 6:30 pm

The SWE-EWS Fall Business Meeting was held on Tuesday, at Isla Bonita in Richland, WA. Section business and reports from the WE12 National SWE Conference was discussed



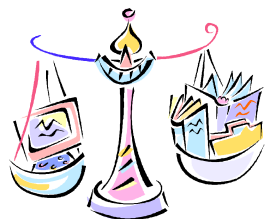
Holiday Party

Friday December 14th 7 pm

Please join Eastern Washington SWE in celebrating at the annual Holiday Party! The Holiday Party will be held on Friday, December 14, 2012 at 7pm. Please RSVP to easternwashingtonswe@gmail.com for directions and other information about this event.

Work/Life Balance Panel

The work life balance event was held on Wednesday Oct 17th with a panel consisting of three engineers: **Joan Young, Alicia Boyd**, and guest Angela Kora. Alicia, mom of Cinda, shared her collection of books regarding life balance issues, such as “Your Money or Your Life”. Angela discussed opening up a business while maintaining an Engineering career. Her business is Ethos Bakery, which specializes in bread baked in a specialty wood-fired oven. Joan, who has three sons, shared her recommendations on “keeping things simple”.



Congratulations!



Danielle Sitts is the winner of the Wanda Munn Scholarship. This scholarship was initiated and funded by EWS, and is now administered and awarded by SWE National. Danielle attends Oregon State University in Corvallis and is studying Electrical Engineering.

Robotics Competitions

The Moses Lake FIRST Lego League (FLL) and FIRST Tech Challenge (FTC) are looking for help in leading their all-girls team to the next competition. The FLL is an international competition organized by FIRST (Inspiration and Recognition of Science and Technology) for elementary and middle school students. The FTC is a robotics competition targeted toward middle and high school-aged students and offers the traditional challenge of a FIRST Robotics competition but with a more accessible and affordable robotics kit. Please contact Kat Stebbins at Katrianna1@aol.com /509-760-4589 for more information.



FIRST® Robotics Competition <http://firstlegoleague.org/>

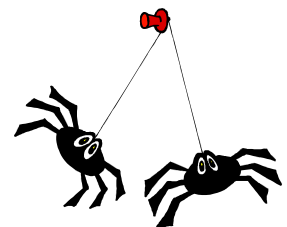
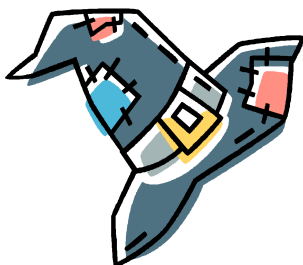
Region J Conference

Mark your calendars for the Region J Conference to be held April 5th through April 7th 2013, in Lacey Washington.



HALLOWEEN PARTY

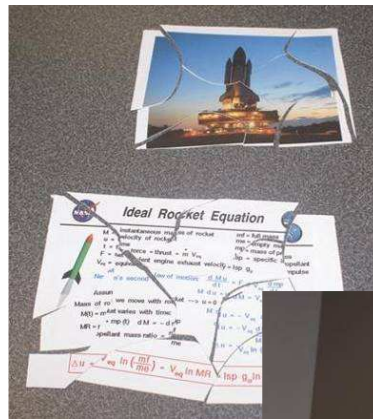
This years Halloween Party wall was hosted by **Roxie Wight** on Saturday October 27th. Ghosts and goblins were treated to good food, fun and games.



Membership Event



This event was held on Thursday September 20th. Amanda Tyler, organized this event held at the Energy Solutions offices. The event was an opportunity to introduce our organization to potential members. There were icebreaker games (photo puzzles!) and plenty of food. EWS members, **Dimple Patel**, **Alice Orrell**, **Roxie Wight**, and **Ann Langevin** spoke at this event about their experiences in Engineering and with SWE. Guests included prospective members and a potential Engineering student.



Positions

The following positions are open.
Contact

easternwashingtonswe@gmail.com

if you are interested in more information about any of the following positions for the FY 2013 fiscal year (July 1, 2012 through June 30, 2013):

- Professional Development Chair – Plan the SWE-EWS professional development event.
- Membership Chair – Welcome new members to the section and lead the annual membership growth event
- Scholarship Committee Members - Assist scholarship chair Christina Marinovici in promoting the SWE-EWS scholarship and selecting the recipient.
- Expanding Your Horizon's Planning Committee Member A EWS-SWE representative is needed for the planning committee.
- Regional Conference Committee Member helps with the planning for the Spokane ABJ meeting and the Region J Conference in Lacey next spring. If you are interested, contact Dimple Patel at dimple.h.patel@gmail.com.

Contacts

Position	Name	E-mail
President	Michelle Parker	myparker@bechtel.com
Vice President/ Programs	Amanda Tyler	xochiltz1@yahoo.com
Secretary	Taran Dhaliwal	Tarandeep_K_Dhaliwal@rl.gov
Treasurer/ Finance Chair	Dimple Patel	Dimple.h.patel@gmail.com
Section Rep. Nominating Chair	Jennifer Williamson	Jennifer.Williamson@pnl.gov
Career Guidance/ Outreach Chair	Josette Gates	Josette.Gates@terex.com
Publicity Chair Awards Chair	Renee Slocumb	rcslocum@bechtel.com
Membership Chair	Open	
Professional Development Chair	Open	
Newsletter Editor	Ann Langevin	Langevin2@charter.net
TCTC Chair	Joan Young	Joan.young@pnl.gov
Scholarship Chair	Cristina Marinovici	cristina.marinovici@pnl.gov
Job Postings	easternwashingtonswe@gmail.com	
Certificate of Merit Chair	Jennifer Williamson	Jennifer.Williamson@pnnl.gov
Historian	Wanda Munn	wimunn@aol.com
SWE-EWS Webmaster	Jenny Stenkamp	jjaye822@yahoo.com
Region J Governor	Alice Orrell	aliceorrell@gmail.com

SWE's Mission: Stimulate women to achieve full potential in careers as engineers and leaders, expand the image of the engineering profession as a positive force in improving the quality of life, and demonstrate the value of diversity.

We're on the Web!

Visit us at:

www.eastwashingtonswe.org



Society of
Women Engineers

ASPIRE • ADVANCE • ACHIEVE